



ISO A

ISO 7241/A - WITH POPPET

Available PL version, free flow (without valve) on both sides

Edition. 21.3

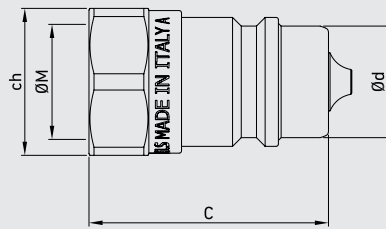
CS Carbon Steel

- Type: Quick Couplings
- Models: ISO 7241/A
- Sizes: from DN6 to DN50
- Pressure: up to PN420
- Treatment: Galvanized

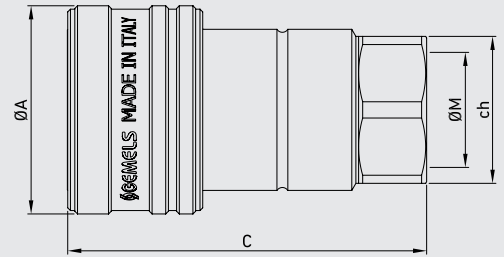
SS Stainless Steel

- Type: Quick Couplings
- Models: ISO 7241/A
- Sizes: from DN6 to DN50
- Pressure: up to PN300

Male



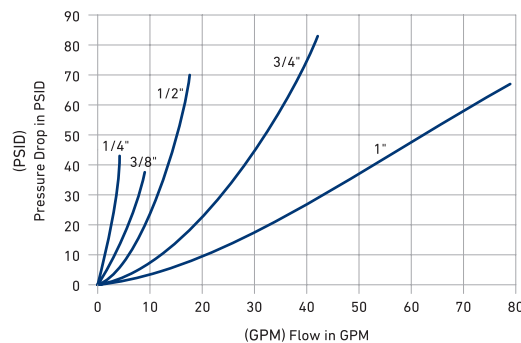
Female



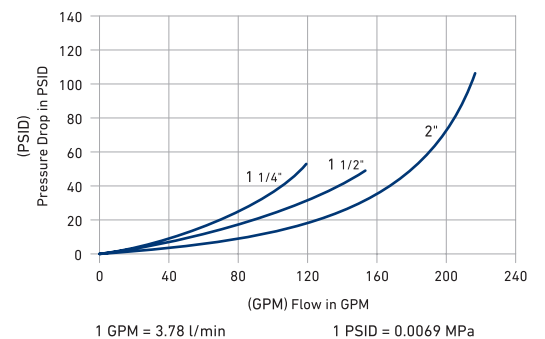
Available also in patented version: ball valve with integrated quick coupling.

Performance

(1/4", 3/8", 1/2", 3/4", 1")
 Series (1/4", 3/8", 1/2", 3/4", 1")
 200SUS (Test Fluid: Oil-200SUS)



(1 1/4", 1 1/2", 2")
 (1 1/4", 1 1/2", 2")



1 GPM = 3.78 l/min

1 PSID = 0.0069 MPa



CODE DESCRIPTION STRUCTURE

QC G1/2 M/F DN12,5 1 B

Type of coupling

ISO 7241/A

Ends

ISO 1179-1 BSPP	ASME B1.20.1 NPT	ISO 11926-1 (SAE J1926-1) ORB
G 1/4	N 1/4	SAE4
G 3/8	N 3/8	SAE6
G 1/2	N 1/2	SAE8
G 3/4	N 3/4	SAE12
G 1	N 1	SAE16
G 1 1/4	N 1 1/4	SAE20
G 1 1/2	N 1 1/2	SAE24
G 2	N 2	SAE32

MALE

FEMALE

DN/ISO

- 6,3
- 10
- 12,5
- 20
- 25
- 31,5
- 40
- 50

Body Material

- 1 = 1,0737
- 4 = 1,4404

Seal material

- B = NBR E = FKM*
- E = FKM

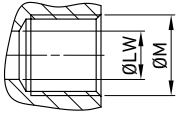
*On request

- Plugs
- Caps



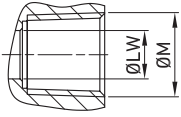
Available colours:

- Blue
- Yellow
- Red
- Green



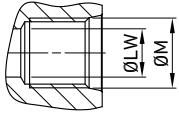
**QUICK COUPLINGS ISO 7241/A (male / female)
FEMALE THREAD ISO 1179-1 BSPP WITH POPPET**

										CS Carbon Steel											SS Stainless Steel
TYPE	DN	PN	ØA	C	Ød	ch	ØM	WEIGHT	ITEM CODE	TYPE	DN	PN	ØA	C	Ød	ch	ØM	WEIGHT	ITEM CODE		
QC ISO A G 1/4 MALE	6.3	MPa 42	mm - 35,5	11,86	19		G1/4	kg 0,037	NC01G010000	QC ISO A G 1/4 MALE	6.3	MPa 30	mm - 34	11,8	19		G1/4	kg 0,037	NC01G010001		
		Psi 6090	inch - 1,40	0,47	0,75			Psi 4350				inch - 1,34	0,46	0,75							
QC ISO A G 1/4 FEMALE	6.3	MPa 42	mm 25	49,6	-	19	G1/4	kg 0,11	NC02G010000	QC ISO A G 1/4 FEMALE	6.3	MPa 30	mm 26	58,5	-	19	G1/4	kg 0,11	NC02G010001		
		Psi 6090	inch 0,98	1,95	-	0,75						Psi 4350	inch 1,02	2,30	-	0,75					
QC ISO A G 3/8 MALE	10	MPa 42	mm - 39,5	17,3	22		G3/8	kg 0,05	NC01G020000	QC ISO A G 3/8 MALE	10	MPa 25	mm - 40	17,3	22		G3/8	kg 0,05	NC01G025000		
		Psi 6090	inch - 1,56	0,68	0,87			Psi 3625				inch - 1,57	0,68	0,87							
QC ISO A G 3/8 FEMALE	10	MPa 42	mm 32	57	-	22	G3/8	kg 0,15	NC02G020000	QC ISO A G 3/8 FEMALE	10	MPa 25	mm 30	64	-	22	G3/8	kg 0,15	NC02G025000		
		Psi 6090	inch 1,26	2,24	-	0,87						Psi 3625	inch 1,18	2,52	-	0,87					
QC ISO A G 1/2 MALE	12,5	MPa 35	mm - 44	20,5	27		G1/2	kg 0,0924	NC01G030000	QC ISO A G 1/2 MALE	12,5	MPa 25	mm - 46	20,5	27		G1/2	kg 0,0924	NC01G030001		
		Psi 5075	inch - 1,73	0,81	1,06			Psi 3625				inch - 1,81	0,81	1,06							
QC ISO A G 1/2 FEMALE	12,5	MPa 35	mm 38,25	66	-	27	G1/2	kg 0,227	NC02G030000	QC ISO A G 1/2 FEMALE	12,5	MPa 25	mm 38	73	-	27	G1/2	kg 0,227	NC02G030001		
		Psi 5075	inch 1,51	2,60	-	1,06						Psi 3625	inch 1,50	2,87	-	1,06					
QC ISO A G 3/4 MALE	20	MPa 25	mm - 55,5	29,1	34		G3/4	kg 0,2	NC01G040000	QC ISO A G 3/4 MALE	20	MPa 25	mm - 54	29,1	36		G3/4	kg 0,2	NC01G045000		
		Psi 3625	inch - 2,19	1,15	1,34			Psi 3625				inch - 2,13	1,15	1,42							
QC ISO A G 3/4 FEMALE	20	MPa 25	mm 48	83	-	34	G3/4	kg 0,49	NC02G040000	QC ISO A G 3/4 FEMALE	20	MPa 25	mm 48	87,5	-	36	G3/4	kg 0,49	NC02G045000		
		Psi 3625	inch 1,89	3,27	-	1,34						Psi 3625	inch 1,89	3,44	-	1,42					
QC ISO A G 1 MALE	25	MPa 25	mm - 66	34,34	41		G 1	kg 0,311	NC01G050000	QC ISO A G 1 MALE	25	MPa 20	mm - 63	34,3	41		G 1	kg 0,311	NC01G050001		
		Psi 3625	inch - 2,60	1,35	1,61			Psi 2900				inch - 2,48	1,35	1,61							
QC ISO A G 1 FEMALE	25	MPa 25	mm 56	100	-	41	G 1	kg 0,7825	NC02G050000	QC ISO A G 1 FEMALE	25	MPa 20	mm 54	103	-	38	G 1	kg 0,7825	NC02G050001		
		Psi 3625	inch 2,20	3,94	-	1,61						Psi 2900	inch 2,13	4,06	-	1,50					
QC ISO A G 1 1/4 MALE	31,5	MPa 25	mm - 74,8	45	50		G 1 1/4	kg 0,537	NC01G060000	QC ISO A G 1 1/4 MALE	31,5	MPa 10	mm - 69	45	50		G 1 1/4	kg 0,537	NC01G065000		
		Psi 3625	inch - 2,94	1,77	1,97			Psi 1450				inch - 2,72	1,77	1,97							
QC ISO A G 1 1/4 FEMALE	31,5	MPa 25	mm 71	117,5	-	50	G 1 1/4	kg 1,243	NC02G060000	QC ISO A G 1 1/4 FEMALE	31,5	MPa 10	mm 70	115	-	50	G 1 1/4	kg 1,243	NC02G065000		
		Psi 3625	inch 2,80	4,63	-	1,97						Psi 1450	inch 2,76	4,53	-	1,97					
QC ISO A G 1 1/2 MALE	40	MPa 20	mm - 84	55	60		G 1 1/2	kg 0,881	NC01G070000	QC ISO A G 1 1/2 MALE	40	MPa 8	mm - 73	55	60		G 1 1/2	kg 0,881	NC01G075000		
		Psi 2900	inch - 3,31	2,17	2,36			Psi 1160				inch - 2,87	2,17	2,36							
QC ISO A G 1 1/2 FEMALE	40	MPa 20	mm 86	135	-	60	G 1 1/2	kg 2,126	NC02G070000	QC ISO A G 1 1/2 FEMALE	40	MPa 8	mm 81	123	-	60	G 1 1/2	kg 2,126	NC02G075000		
		Psi 2900	inch 3,39	5,31	-	2,36						Psi 1160	inch 3,19	4,84	-	2,36					
QC ISO A G 2 MALE	50	MPa 15	mm - 102,5	65,1	75		G 2	kg 1,613	NC01G080000	QC ISO A G 2 MALE	50	MPa 6	mm - 90	65,1	70		G 2	kg 1,613	NC01G085000		
		Psi 2175	inch - 4,04	2,56	2,95			Psi 870				inch - 3,54	2,56	2,76							
QC ISO A G 2 FEMALE	50	MPa 15	mm 103	162,5	-	75	G 2	kg 3,961	NC02G080000	QC ISO A G 2 FEMALE	50	MPa 6	mm 103	147	-	70	G 2	kg 3,961	NC02G085000		
		Psi 2175	inch 4,06	6,40	-	2,95						Psi 870	inch 4,06	5,79	-	2,76					



QUICK COUPLINGS ISO 7241/A (male / female) FEMALE THREAD ASME B1.20.1 NPT WITH POPPET

										CS Carbon Steel											SS Stainless Steel
TYPE	DN	PN	ØA	C	Ød	ch	ØM	WEIGHT	ITEM CODE	TYPE	DN	PN	ØA	C	Ød	ch	ØM	WEIGHT	ITEM CODE		
QC ISO A N 1/4 MALE	6.3	MPa 42	mm - 35,5	11,86	19	N1/4		kg 0,037	NC01N010000	QC ISO A N 1/4 MALE	6.3	MPa 30	mm - 34	11,8	19	N1/4		kg 0,037	NC01N010001		
		Psi 6090	inch - 1,40	0,47	0,75			lb 0,08				Psi 4350	inch - 1,34	0,46	0,75			lb 0,08			
QC ISO A N 1/4 FEMALE	6.3	MPa 42	mm 25	49,6	- 19	N1/4		kg 0,11	NC02N010000	QC ISO A N 1/4 FEMALE	6.3	MPa 30	mm 26	58,5	- 19	N1/4		kg 0,11	NC02N010001		
		Psi 6090	inch 0,98	1,95	- 0,75			lb 0,24				Psi 4350	inch 1,02	2,30	- 0,75			lb 0,24			
QC ISO A N 3/8 MALE	10	MPa 42	mm - 39,5	17,3	22	N3/8		kg 0,05	NC01N020000	QC ISO A N 3/8 MALE	10	MPa 25	mm - 40	17,3	22	N3/8		kg 0,05	NC01N020001		
		Psi 6090	inch - 1,56	0,68	0,87			lb 0,11				Psi 3625	inch - 1,57	0,68	0,87			lb 0,11			
QC ISO A N 3/8 FEMALE	10	MPa 42	mm 32	57	- 22	N3/8		kg 0,15	NC02N020000	QC ISO A N 3/8 FEMALE	10	MPa 25	mm 30	64	- 22	N3/8		kg 0,15	NC02N020001		
		Psi 6090	inch 1,26	2,24	- 0,87			lb 0,33				Psi 3625	inch 1,18	2,52	- 0,87			lb 0,33			
QC ISO A N 1/2 MALE	12,5	MPa 35	mm - 44	20,5	27	N1/2		kg 0,0924	NC01N030000	QC ISO A N 1/2 MALE	12,5	MPa 25	mm - 46	20,5	27	N1/2		kg 0,0924	NC01N030001		
		Psi 5075	inch - 1,73	0,81	1,06			lb 0,20				Psi 3625	inch - 1,81	0,81	1,06			lb 0,20			
QC ISO A N 1/2 FEMALE	12,5	MPa 35	mm 38,25	66	- 27	N1/2		kg 0,227	NC02N030000	QC ISO A N 1/2 FEMALE	12,5	MPa 25	mm 38	73	- 27	N1/2		kg 0,227	NC02N030001		
		Psi 5075	inch 1,51	2,60	- 1,06			lb 0,50				Psi 3625	inch 1,50	2,87	- 1,06			lb 0,50			
QC ISO A N 3/4 MALE	20	MPa 25	mm - 55,5	29,1	34	N3/4		kg 0,2	NC01N040000	QC ISO A N 3/4 MALE	20	MPa 25	mm - 54	29,1	36	N3/4		kg 0,2	NC01N040001		
		Psi 3625	inch - 2,19	1,15	1,34			lb 0,44				Psi 3625	inch - 2,13	1,15	1,42			lb 0,44			
QC ISO A N 3/4 FEMALE	20	MPa 25	mm 48	83	- 34	N3/4		kg 0,49	NC02N040000	QC ISO A N 3/4 FEMALE	20	MPa 25	mm 48	87,5	- 36	N3/4		kg 0,49	NC02N040001		
		Psi 3625	inch 1,89	3,27	- 1,34			lb 1,08				Psi 3625	inch 1,89	3,44	- 1,42			lb 1,08			
QC ISO A N 1 MALE	25	MPa 25	mm - 66	34,34	41	N 1		kg 0,311	NC01N050000	QC ISO A N 1 MALE	25	MPa 20	mm - 63	34,3	41	N 1		kg 0,311	NC01N050001		
		Psi 3625	inch - 2,60	1,35	1,61			lb 0,69				Psi 2900	inch - 2,48	1,35	1,61			lb 0,69			
QC ISO A N 1 FEMALE	25	MPa 25	mm 56	100	- 41	G 1		kg 0,7825	NC02N050000	QC ISO A N 1 FEMALE	25	MPa 20	mm 54	103	- 38	G 1		kg 0,7825	NC02N050001		
		Psi 3625	inch 2,20	3,94	- 1,61			lb 1,73				Psi 2900	inch 2,13	4,06	- 1,50			lb 1,73			
QC ISO A N 1 1/4 MALE	31,5	MPa 25	mm - 74,8	45	50	N1 1/4		kg 0,537	NC01N060000	QC ISO A N 1 1/4 MALE	31,5	MPa 10	mm - 69	45	50	N1 1/4		kg 0,537	NC01N060001		
		Psi 3625	inch - 2,94	1,77	1,97			lb 1,18				Psi 1450	inch - 2,72	1,77	1,97			lb 1,18			
QC ISO A N 1 1/4 FEMALE	31,5	MPa 25	mm 71	117,5	- 50	N1 1/4		kg 1,243	NC02N060000	QC ISO A N 1 1/4 FEMALE	31,5	MPa 10	mm 70	115	- 50	N1 1/4		kg 1,243	NC02N060001		
		Psi 3625	inch 2,80	4,63	- 1,97			lb 2,74				Psi 1450	inch 2,76	4,53	- 1,97			lb 2,74			
QC ISO A N 1 1/2 MALE	40	MPa 20	mm - 84	55	60	N1 1/2		kg 0,881	NC01N070000	QC ISO A N 1 1/2 MALE	40	MPa 8	mm - 73	55	60	N1 1/2		kg 0,881	NC01N070001		
		Psi 2900	inch - 3,31	2,17	2,36			lb 1,94				Psi 1160	inch - 2,87	2,17	2,36			lb 1,94			
QC ISO A N 1 1/2 FEMALE	40	MPa 20	mm 86	135	- 60	N1 1/2		kg 2,126	NC02N070000	QC ISO A N 1 1/2 FEMALE	40	MPa 8	mm 81	126	- 60	N1 1/2		kg 2,126	NC02N070001		
		Psi 2900	inch 3,39	5,31	- 2,36			lb 4,69				Psi 1160	inch 3,19	4,96	- 2,36			lb 4,69			
QC ISO A N 2 MALE	50	MPa 15	mm - 102,5	65,1	75	N 2		kg 1,613	NC01N080000	QC ISO A N 2 MALE	50	MPa 6	mm - 90	65,1	70	N 2		kg 1,613	NC01N080001		
		Psi 2175	inch - 4,04	2,56	2,95			lb 3,56				Psi 870	inch - 3,54	2,56	2,76			lb 3,56			
QC ISO A N 2 FEMALE	50	MPa 15	mm 103	162,5	- 75	N 2		kg 3,961	NC02N080000	QC ISO A N 2 FEMALE	50	MPa 6	mm 103	147	- 70	N 2		kg 3,961	NC02N080001		
		Psi 2175	inch 4,06	6,40	- 2,95			lb 8,73				Psi 870	inch 4,06	5,79	- 2,76			lb 8,73			



**QUICK COUPLINGS ISO 7241/A (male / female)
FEMALE THREAD ISO 11926-1 (SAE J1926-1) ORB WITH POPPET**

										CS Carbon Steel											SS Stainless Steel
TYPE	DN	PN	ØA	C	Ød	ch	ØM	WEIGHT	ITEM CODE	TYPE	DN	PN	ØA	C	Ød	ch	ØM	WEIGHT	ITEM CODE		
QC ISO A SAE4 MALE	6.3	MPa 42	mm -	35,5	11,86	19	SAE4	kg 0,037	NC01S010000	QC ISO A SAE4 MALE	6.3	MPa 30	mm -	34	11,8	19	SAE4	kg 0,037	NC01S01S000		
		Psi 6090	inch -	1,40	0,47	0,75		lb 0,08				Psi 4350	inch -	1,34	0,46	0,75		lb 0,08			
QC ISO A SAE4 FEMALE	6.3	MPa 42	mm 25	49,6	-	19	SAE4	kg 0,11	NC02S010000	QC ISO A SAE4 FEMALE	6.3	MPa 30	mm 26	58,5	-	19	SAE4	kg 0,11	NC02S01S000		
		Psi 6090	inch 0,98	1,95	-	0,75		lb 0,24				Psi 4350	inch 1,02	2,30	-	0,75		lb 0,24			
QC ISO A SAE6 MALE	10	MPa 42	mm -	39,5	17,3	22	SAE6	kg 0,05	NC01S020000	QC ISO A SAE6 MALE	10	MPa 25	mm -	40	17,3	22	SAE6	kg 0,05	NC01S02S000		
		Psi 6090	inch -	1,56	0,68	0,87		lb 0,11				Psi 3625	inch -	1,57	0,68	0,87		lb 0,11			
QC ISO A SAE6 FEMALE	10	MPa 42	mm 32	57	-	22	SAE6	kg 0,15	NC02S020000	QC ISO A SAE6 FEMALE	10	MPa 25	mm 30	64	-	22	SAE6	kg 0,15	NC02S02S000		
		Psi 6090	inch 1,26	2,24	-	0,87		lb 0,33				Psi 3625	inch 1,18	2,52	-	0,87		lb 0,33			
QC ISO A SAE8 MALE	12.5	MPa 35	mm -	44	20,5	27	SAE8	kg 0,0924	NC01S030000	QC ISO A SAE8 MALE	12.5	MPa 25	mm -	46	20,5	27	SAE8	kg 0,0924	NC01S03S000		
		Psi 5075	inch -	1,73	0,81	1,06		lb 0,20				Psi 3625	inch -	1,81	0,81	1,06		lb 0,20			
QC ISO A SAE8 FEMALE	12.5	MPa 35	mm 38,25	66	-	27	SAE8	kg 0,227	NC02S030000	QC ISO A SAE8 FEMALE	12.5	MPa 25	mm 38	73	-	27	SAE8	kg 0,227	NC02S03S000		
		Psi 5075	inch 1,51	2,60	-	1,06		lb 0,50				Psi 3625	inch 1,50	2,87	-	1,06		lb 0,50			
QC ISO A SAE12 MALE	20	MPa 25	mm -	55,5	29,1	34	SAE12	kg 0,2	NC01S040000	QC ISO A SAE12 MALE	20	MPa 25	mm -	54	29,1	36	SAE12	kg 0,2	NC01S04S000		
		Psi 3625	inch -	2,19	1,15	1,34		lb 0,44				Psi 3625	inch -	2,13	1,15	1,42		lb 0,44			
QC ISO A SAE12 FEMALE	20	MPa 25	mm 48	83	-	34	SAE12	kg 0,49	NC02S040000	QC ISO A SAE12 FEMALE	20	MPa 25	mm 48	87,5	-	36	SAE12	kg 0,49	NC02S04S000		
		Psi 3625	inch 1,89	3,27	-	1,34		lb 1,08				Psi 3625	inch 1,89	3,44	-	1,42		lb 1,08			
QC ISO A SAE16 MALE	25	MPa 25	mm -	66	34,34	41	SAE16	kg 0,311	NC01S050000	QC ISO A SAE16 MALE	25	MPa 20	mm -	63	34,3	41	SAE16	kg 0,311	NC01S05S000		
		Psi 3625	inch -	2,60	1,35	1,61		lb 0,69				Psi 2900	inch -	2,48	1,35	1,61		lb 0,69			
QC ISO A SAE16 FEMALE	25	MPa 25	mm 56	100	-	41	SAE16	kg 0,7825	NC02S050000	QC ISO A SAE16 FEMALE	25	MPa 20	mm 54	103	-	38	SAE16	kg 0,7825	NC02S05S000		
		Psi 3625	inch 2,20	3,94	-	1,61		lb 1,73				Psi 2900	inch 2,13	4,06	-	1,50		lb 1,73			
QC ISO A SAE20 MALE	31.5	MPa 25	mm -	74,8	45	50	SAE20	kg 0,537	NC01S060000	QC ISO A SAE20 MALE	31.5	MPa 10	mm -	69	45	50	SAE20	kg 0,537	NC01S06S000		
		Psi 3625	inch -	2,94	1,77	1,97		lb 1,18				Psi 1450	inch -	2,72	1,77	1,97		lb 1,18			
QC ISO A SAE20 FEMALE	31.5	MPa 25	mm 71	117,5	-	50	SAE20	kg 1,243	NC02S060000	QC ISO A SAE20 FEMALE	31.5	MPa 10	mm 70	115	-	50	SAE20	kg 1,243	NC02S06S000		
		Psi 3625	inch 2,80	4,63	-	1,97		lb 2,74				Psi 1450	inch 2,76	4,53	-	1,97		lb 2,74			
QC ISO A SAE24 MALE	40	MPa 20	mm -	84	55	60	SAE24	kg 0,881	NC01S070000	QC ISO A SAE24 MALE	40	MPa 8	mm -	73	55	60	SAE24	kg 0,881	NC01S07S000		
		Psi 2900	inch -	3,31	2,17	2,36		lb 1,94				Psi 1160	inch -	2,87	2,17	2,36		lb 1,94			
QC ISO A SAE24 FEMALE	40	MPa 20	mm 86	135	-	60	SAE24	kg 2,126	NC02S070000	QC ISO A SAE24 FEMALE	40	MPa 8	mm 81	126	-	60	SAE24	kg 2,126	NC02S07S000		
		Psi 2900	inch 3,39	5,31	-	2,36		lb 4,69				Psi 1160	inch 3,19	4,96	-	2,36		lb 4,69			
QC ISO A SAE32 MALE	50	MPa 15	mm -	102,5	65,1	75	SAE32	kg 1,613	NC01S080000	QC ISO A SAE32 MALE	50	MPa 6	mm -	90	65,1	70	SAE32	kg 1,613	NC01S08S000		
		Psi 2175	inch -	4,04	2,56	2,95		lb 3,56				Psi 870	inch -	3,54	2,56	2,76		lb 3,56			
QC ISO A SAE32 FEMALE	50	MPa 15	mm 103	162,5	-	75	SAE32	kg 3,961	NC02S080000	QC ISO A SAE32 FEMALE	50	MPa 6	mm 103	147	-	70	SAE32	kg 3,961	NC02S08S000		
		Psi 2175	inch 4,06	6,40	-	2,95		lb 8,73				Psi 870	inch 4,06	5,79	-	2,76		lb 8,73			