



ISO B

ISO 7241/B - WITH POPPET

Edition. 21.3

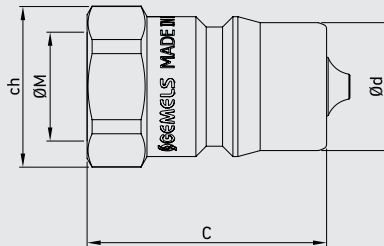
CS Carbon Steel

- Type: Quick Couplings
- Models: ISO 7241/B
- Sizes: from DN6 to DN50
- Pressure: up to PN420
- Treatment: Galvanized

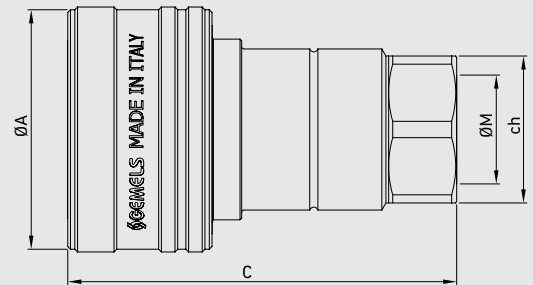
SS Stainless Steel

- Type: Quick Couplings
- Models: ISO 7241/B
- Sizes: from DN6 to DN50
- Pressure: up to PN300

Male



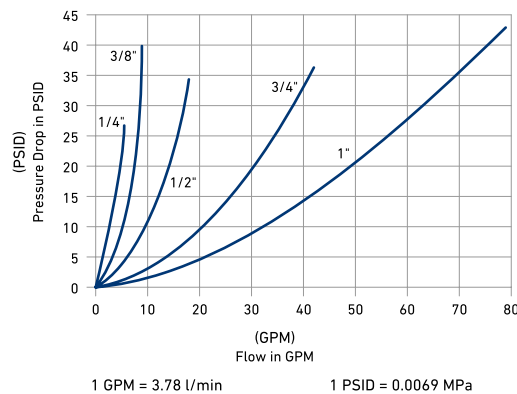
Female



Available also in patented version: ball valve with integrated quick coupling.

Performance

(1/4", 3/8", 1/2", 3/4", 1")
 Series (1/4", 3/8", 1/2", 3/4", 1")
 200SUS (Test Fluid: Oil-200SUS)





CODE DESCRIPTION STRUCTURE

QC G1/2 M/F DN12,5 1 B

Type of coupling

ISO 7241/B

Ends

ISO 1179-1 BSPP	ASME B1.20.1 NPT	ISO 11926-1 (SAE J1926-1) ORB		
G 1/8	N 1/8	SAE4	Carbon steel	Stainless steel
G 1/4	N 1/4	SAE6		
G 3/8	N 3/8	SAE8		
G 1/2	N 1/2	SAE12		
G 3/4	N 3/4	SAE16		
G 1	N 1	SAE20		
G 1 1/2	N 1 1/2	SAE24		
G 2	N 2	SAE32		

MALE

FEMALE

DN/ISO

5		
6,3		
10	Carbon steel	Stainless steel
12,5		
20		
25		
40		
50		

Body Material

- 1 = 1,0737
- 4 = 1,4404

Seal material

- B = NBR E = FKM*
- E = FKM

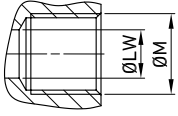
*On request

- Plugs
- Caps



Available colours:

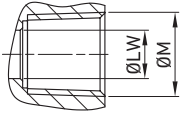
- Blue
- Yellow
- Red
- Green



**QUICK COUPLINGS ISO 7241/B (male / female)
MALE THREAD METRIC ISO 1179-1 BSPP WITH POPPET**

										CS Carbon Steel											SS Stainless Steel
TYPE	DN	PN	ØA	C	Ød	ch	ØM	WEIGHT	ITEM CODE	TYPE	DN	PN	ØA	C	Ød	ch	ØM	WEIGHT	ITEM CODE		
QC ISO B G 1/4 MALE	6.3	MPa 42	mm -	35,5	14,2	19	G1/4	kg 0,036	NC03G010000	QC ISO B G 1/8 MALE	5	MPa 30	mm -	31	10,8	14	G1/8	kg 0,02	NC03G000001		
		Psi 6090	inch -	1,40	0,56	0,75		Psi 4350				inch -	1,22	0,43	0,55	lb 0,04					
QC ISO B G 1/4 FEMALE	6.3	MPa 42	mm	28,5	56	- 19	G1/4	kg 0,128	NC04G010000	QC ISO B G 1/8 FEMALE	5	MPa 30	mm	24	50	- 14	G1/8	kg 0,07	NC04G000001		
		Psi 6090	inch	1,12	2,20	- 0,75		Psi 4350				inch	0,94	1,97	- 0,55	lb 0,15					
QC ISO B G 3/8 MALE	10	MPa 42	mm -	39	19,05	22	G3/8	kg 0,07	NC03G020000	QC ISO B G 1/4 MALE	6.3	MPa 30	mm -	37	14,1	19	G1/4	kg 0,036	NC03G010001		
		Psi 6090	inch -	1,54	0,75	0,87		Psi 4350				inch -	1,46	0,56	0,75	lb 0,08					
QC ISO B G 3/8 FEMALE	10	MPa 42	mm	35	63	- 22	G3/8	kg 0,217	NC04G020000	QC ISO B G 1/4 FEMALE	6.3	MPa 30	mm	28	58,5	- 19	G1/4	kg 0,128	NC04G010001		
		Psi 6090	inch	1,38	2,48	- 0,87		Psi 4350				inch	1,10	2,30	- 0,75	lb 0,28					
QC ISO B G 1/2 MALE	12.5	MPa 42	mm -	44	23,5	27	G1/2	kg 0,11	NC03G030000	QC ISO B G 3/8 MALE	10	MPa 25	mm -	39	19	22	G3/8	kg 0,07	NC03G020001		
		Psi 6090	inch -	1,73	0,93	1,06		Psi 3625				inch -	1,54	0,75	0,87	lb 0,15					
QC ISO B G 1/2 FEMALE	12.5	MPa 42	mm	45	71,5	- 27	G1/2	kg 0,36	NC04G030000	QC ISO B G 3/8 FEMALE	10	MPa 25	mm	35	64	- 22	G3/8	kg 0,217	NC04G020001		
		Psi 6090	inch	1,77	2,81	- 1,06		Psi 3625				inch	1,38	2,52	- 0,87	lb 0,48					
QC ISO B G 3/4 MALE	20	MPa 25	mm -	55,5	31,45	36	G3/4	kg 0,22	NC03G040000	QC ISO B G 1/2 MALE	12.5	MPa 25	mm -	45,5	23,5	27	G1/2	kg 0,11	NC03G030001		
		Psi 3625	inch -	2,19	1,24	1,42		Psi 3625				inch -	1,79	0,93	1,06	lb 0,24					
QC ISO B G 3/4 FEMALE	20	MPa 25	mm	55	90	- 36	G3/4	kg 0,668	NC04G040000	QC ISO B G 1/2 FEMALE	12.5	MPa 25	mm	42	73	- 27	G1/2	kg 0,36	NC04G030001		
		Psi 3625	inch	2,17	3,54	- 1,42		Psi 3625				inch	1,65	2,87	- 1,06	lb 0,79					
QC ISO B G 1 MALE	25	MPa 25	mm -	66	37,8	41	G1	kg 0,3466	NC03G050000	QC ISO B G 3/4 MALE	20	MPa 25	mm -	54	31,4	36	G3/4	kg 0,22	NC03G040001		
		Psi 3625	inch -	2,60	1,49	1,61		Psi 3625				inch -	2,13	1,24	1,42	lb 0,49					
QC ISO B G 1 FEMALE	25	MPa 25	mm	63	106	- 41	G1	kg 1,005	NC04G050000	QC ISO B G 3/4 FEMALE	20	MPa 25	mm	52	87,5	- 36	G3/4	kg 0,668	NC04G040001		
		Psi 3625	inch	2,48	4,17	- 1,61		Psi 3625				inch	2,05	3,44	- 1,42	lb 1,47					
QC ISO B G 1 MALE	25	MPa 20	mm -	63	37,8	41	G1	kg 0,3466	NC03G050001	QC ISO B G 1 FEMALE	25	MPa 20	mm -	60	103	- 41	G1	kg 1,005	NC04G050001		
		Psi 2900	inch -	2,48	1,49	1,61		Psi 2900				inch	2,36	4,06	- 1,61	lb 2,22					
QC ISO B G 1 1/4 MALE	31.5	MPa 14	mm -	126	44,5	65	G1 1/4	kg -	NC03G06S000	QC ISO B G 1 1/4 FEMALE	31.5	MPa 14	mm -	126	44,5	65	G1 1/4	kg -	NC04G06S000		
		Psi 2030	inch -	4,96	1,75	2,56		Psi 2030				inch	2,94	4,96	- 2,56	lb -					
QC ISO B G 1 1/2 MALE	40	MPa 14	mm -	126	44,5	65	G1 1/2	kg -	NC03G07S000	QC ISO B G 1 1/2 FEMALE	40	MPa 14	mm -	126	44,5	65	G1 1/2	kg -	NC04G07S000		
		Psi 2030	inch -	4,96	1,75	2,56		Psi 2030				inch	2,94	4,96	- 2,56	lb -					
QC ISO B G 2 MALE	50	MPa 9	mm -	142	63,2	90	G2	kg -	NC03G08S000	QC ISO B G 2 FEMALE	50	MPa 9	mm -	105	142	- 90	G2	kg -	NC04G08S000		
		Psi 1305	inch -	5,59	2,49	3,54		Psi 1305				inch	4,13	5,59	- 3,54	lb -					

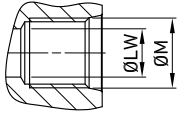
ABOVE 1": *ON REQUEST



QUICK COUPLINGS ISO 7241/B (male / female) FEMALE THREAD ASME B1.20.1 NPT WITH POPPET

										CS Carbon Steel											SS Stainless Steel
TYPE	DN	PN	ØA	C	Ød	ch	ØM	WEIGHT	ITEM CODE	TYPE	DN	PN	ØA	C	Ød	ch	ØM	WEIGHT	ITEM CODE		
QC ISO B N 1/4 MALE	6.3	MPa 42	mm -	35,5	14,2	19	N1/4	kg 0,036	NC03N010000	QC ISO B N 1/8 MALE	5	MPa 30	mm -	31	10,8	14	N1/8	kg 0,02	NC03N00S000		
		Psi 6090	inch -	1,40	0,56	0,75		Psi 4350				inch -	1,22	0,43	0,55	lb 0,08		lb 0,04			
QC ISO B N 1/4 FEMALE	6.3	MPa 42	mm	28,5	56	-	N1/4	kg 0,128	NC04N010000	QC ISO B N 1/8 FEMALE	5	MPa 30	mm	24	50	-	N1/8	kg 0,07	NC04N00S000		
		Psi 6090	inch	1,12	2,20	-		0,75				Psi 4350	inch	0,94	1,97	-		0,55		lb 0,15	
QC ISO B N 3/8 MALE	10	MPa 42	mm -	39	19,05	22	N3/8	kg 0,07	NC03N020000	QC ISO B N 1/4 MALE	6.3	MPa 30	mm -	37	14,1	19	N1/4	kg 0,036	NC03N01S000		
		Psi 6090	inch -	1,54	0,75	0,87		Psi 4350				inch -	1,46	0,56	0,75	lb 0,08					
QC ISO B N 3/8 FEMALE	10	MPa 42	mm	35	63	-	N3/8	kg 0,217	NC04N020000	QC ISO B N 1/4 FEMALE	6.3	MPa 30	mm	28	58,5	-	N1/4	kg 0,128	NC04N01S000		
		Psi 6090	inch	1,38	2,48	-		0,87				Psi 4350	inch	1,10	2,30	-		0,75		lb 0,28	
QC ISO B N 1/2 MALE	12.5	MPa 42	mm -	44	23,5	27	N1/2	kg 0,11	NC03N030000	QC ISO B N 3/8 MALE	10	MPa 25	mm -	39	19	22	N3/8	kg 0,07	NC03N02S000		
		Psi 6090	inch -	1,73	0,93	1,06		Psi 3625				inch -	1,54	0,75	0,87	lb 0,15					
QC ISO B N 1/2 FEMALE	12.5	MPa 42	mm	45	71,5	-	N1/2	kg 0,36	NC04N030000	QC ISO B N 3/8 FEMALE	10	MPa 25	mm	35	64	-	N3/8	kg 0,217	NC04N02S000		
		Psi 6090	inch	1,77	2,81	-		1,06				Psi 3625	inch	1,38	2,52	-		0,87		lb 0,48	
QC ISO B N 3/4 MALE	20	MPa 25	mm -	55,5	31,45	36	N3/4	kg 0,22	NC03N040000	QC ISO B N 1/2 MALE	12.5	MPa 25	mm -	45,5	23,5	27	N1/2	kg 0,11	NC03N03S000		
		Psi 3625	inch -	2,19	1,24	1,42		Psi 3625				inch -	1,79	0,93	1,06	lb 0,24					
QC ISO B N 3/4 FEMALE	20	MPa 25	mm	55	90	-	N3/4	kg 0,668	NC04N040000	QC ISO B N 1/2 FEMALE	12.5	MPa 25	mm	42	72	-	N1/2	kg 0,36	NC04N03S000		
		Psi 3625	inch	2,17	3,54	-		1,42				Psi 3625	inch	1,65	2,83	-		1,06		lb 0,79	
QC ISO B N 1 MALE	25	MPa 25	mm -	66	37,8	41	N1	kg 0,3466	NC03N050000	QC ISO B N 3/4 MALE	20	MPa 25	mm -	54	31,4	36	N3/4	kg 0,22	NC03N04S000		
		Psi 3625	inch -	2,60	1,49	1,61		Psi 3625				inch -	2,13	1,24	1,42	lb 0,49					
QC ISO B N 1 FEMALE	25	MPa 25	mm	63	106	-	N1	kg 1,005	NC04N050000	QC ISO B N 3/4 FEMALE	20	MPa 25	mm	52	87,5	-	N3/4	kg 0,668	NC04N04S000		
		Psi 3625	inch	2,48	4,17	-		1,61				Psi 3625	inch	2,05	3,44	-		1,42		lb 1,47	
QC ISO B N 1 MALE	25	MPa 20	mm -	63	37,8	41	N1	kg 0,3466	NC03N05S000	QC ISO B N 1 FEMALE	25	Psi 2900	inch -	2,48	1,49	1,61	N1	lb 0,76	NC04N05S000		
		Psi 2900	inch	2,36	4,06	-		1,61				kg 1,005	lb 2,22								
QC ISO B N 1 1/4 MALE	31.5	MPa 14	mm -	126	44,5	65	N1 1/4	kg -	NC03N06S000	QC ISO B N 1 1/4 FEMALE	31.5	Psi 2030	inch -	4,96	1,75	2,56	N1 1/4	lb -	NC04N06S000		
		Psi 2030	inch	74,8	126	-		65				kg -	lb -								
QC ISO B N 1 1/2 MALE	40	MPa 14	mm -	126	44,5	65	N1 1/2	kg -	NC03N07S000	QC ISO B N 1 1/2 FEMALE	40	Psi 2030	inch -	4,96	1,75	2,56	N1 1/2	lb -	NC04N07S000		
		Psi 2030	inch	74,8	126	-		65				kg -	lb -								
QC ISO B N 2 MALE	50	MPa 9	mm -	142	63,2	90	N2	kg -	NC03N08S000	QC ISO B N 2 FEMALE	50	Psi 1305	inch -	5,59	2,49	3,54	N2	lb -	NC04N08S000		
		Psi 1305	inch	105	142	-		90				kg -	lb -								
QC ISO B N 2 FEMALE	50	MPa 9	mm	105	142	-	N2	kg -	NC04N08S000	QC ISO B N 2 FEMALE	50	Psi 1305	inch	4,13	5,59	-	3,54	N2	lb -		
		Psi 1305	inch	4,13	5,59	-		3,54				kg -	lb -								

ABOVE 1": *ON REQUEST



**QUICK COUPLINGS ISO 7241/B (male / female)
FEMALE THREAD ISO 11926-1 (SAE J1926-1) ORB WITH POPPET**

										CS Carbon Steel											SS Stainless Steel
TYPE	DN	PN	ØA	C	Ød	ch	ØM	WEIGHT	ITEM CODE	TYPE	DN	PN	ØA	C	Ød	ch	ØM	WEIGHT	ITEM CODE		
QC ISO B SAE4 MALE	6.3	MPa 42	mm -	35,5	14,2	19	SAE4	kg 0,036	NC03S010000	QC ISO B SAE4 MALE	6.3	MPa 30	mm -	37	14,1	19	SAE4	kg 0,036	NC03S01S000		
		Psi 6090	inch -	1,40	0,56	0,75		Psi 4350				inch -	1,46	0,56	0,75	lb 0,08					
QC ISO B SAE4 FEMALE	6.3	MPa 42	mm 28,5	56	-	19	SAE4	kg 0,128	NC04S010000	QC ISO B SAE4 FEMALE	6.3	MPa 30	mm 28	58,5	-	19	SAE4	kg 0,128	NC04S01S000		
		Psi 6090	inch 1,12	2,20	-	0,75		Psi 4350				inch 1,10	2,30	-	0,75	lb 0,28					
QC ISO B SAE6 MALE	10	MPa 42	mm -	39	19,05	22	SAE6	kg 0,07	NC03S020000	QC ISO B SAE6 MALE	10	MPa 25	mm -	39	19	22	SAE6	kg 0,07	NC03S02S000		
		Psi 6090	inch -	1,54	0,75	0,87		Psi 3625				inch -	1,54	0,75	0,87	lb 0,15					
QC ISO B SAE6 FEMALE	10	MPa 42	mm 35	63	-	22	SAE6	kg 0,217	NC04S020000	QC ISO B SAE6 FEMALE	10	MPa 25	mm 35	64	-	22	SAE6	kg 0,217	NC04S02S000		
		Psi 6090	inch 1,38	2,48	-	0,87		Psi 3625				inch 1,38	2,52	-	0,87	lb 0,48					
QC ISO B SAE8 MALE	12.5	MPa 42	mm -	44	23,5	27	SAE8	kg 0,11	NC03S030000	QC ISO B SAE8 MALE	12.5	MPa 25	mm -	45,5	23,5	27	SAE8	kg 0,11	NC03S03S000		
		Psi 6090	inch -	1,73	0,93	1,06		Psi 3625				inch -	1,79	0,93	1,06	lb 0,24					
QC ISO B SAE8 FEMALE	12.5	MPa 42	mm 45	71,5	-	27	SAE8	kg 0,36	NC04S030000	QC ISO B SAE8 FEMALE	12.5	MPa 25	mm 42	72	-	27	SAE8	kg 0,36	NC04S03S000		
		Psi 6090	inch 1,77	2,81	-	1,06		Psi 3625				inch 1,65	2,83	-	1,06	lb 0,79					
QC ISO B SAE12 MALE	20	MPa 25	mm -	55,5	31,45	36	SAE12	kg 0,22	NC03S040000	QC ISO B SAE12 MALE	20	MPa 25	mm -	54	31,4	36	SAE12	kg 0,22	NC03S04S000		
		Psi 3625	inch -	2,19	1,24	1,42		Psi 3625				inch -	2,13	1,24	1,42	lb 0,49					
QC ISO B SAE12 FEMALE	20	MPa 25	mm 55	90	-	36	SAE12	kg 0,668	NC04S040000	QC ISO B SAE12 FEMALE	20	MPa 25	mm 52	87,5	-	36	SAE12	kg 0,668	NC04S04S000		
		Psi 3625	inch 2,17	3,54	-	1,42		Psi 3625				inch 2,05	3,44	-	1,42	lb 1,47					
QC ISO B SAE16 MALE	25	MPa 25	mm -	66	37,8	41	SAE16	kg 0,3466	NC03S050000	QC ISO B SAE16 MALE	25	MPa 20	mm -	63	37,8	41	SAE16	kg 0,3466	NC03S05S000		
		Psi 3625	inch -	2,60	1,49	1,61		Psi 2900				inch -	2,48	1,49	1,61	lb 0,76					
QC ISO B SAE16 FEMALE	25	MPa 25	mm 63	106	-	41	SAE16	kg 1,005	NC04S050000	QC ISO B SAE16 FEMALE	25	MPa 20	mm 60	103	-	41	SAE16	kg 1,005	NC04S05S000		
		Psi 3625	inch 2,48	4,17	-	1,61		Psi 2900				inch 2,36	4,06	-	1,61	lb 2,22					
QC ISO B SAE20 MALE	31.5	MPa 35	mm -	126	44,5	65	SAE20	kg -	NC03S06S000	QC ISO B SAE20 MALE	31.5	MPa 35	mm -	126	44,5	65	SAE20	kg -	NC03S06S000		
		Psi 5075	inch -	4,96	1,75	2,56		Psi 5075				inch -	4,96	1,75	2,56	lb -					
QC ISO B SAE20 FEMALE	31.5	MPa 35	mm 74,8	126	-	65	SAE20	kg -	NC04S06S000	QC ISO B SAE20 FEMALE	31.5	MPa 35	mm 74,8	126	-	65	SAE20	kg -	NC04S06S000		
		Psi 5075	inch 2,94	4,96	-	2,56		Psi 5075				inch 2,94	4,96	-	2,56	lb -					
QC ISO B SAE24 MALE	40	MPa 35	mm -	126	44,5	65	SAE24	kg -	NC03S07S000	QC ISO B SAE24 MALE	40	MPa 35	mm -	126	44,5	65	SAE24	kg -	NC03S07S000		
		Psi 5075	inch -	4,96	1,75	2,56		Psi 5075				inch -	4,96	1,75	2,56	lb -					
QC ISO B SAE24 FEMALE	40	MPa 35	mm 74,8	126	-	65	SAE24	kg -	NC04S07S000	QC ISO B SAE24 FEMALE	40	MPa 35	mm 74,8	126	-	65	SAE24	kg -	NC04S07S000		
		Psi 5075	inch 2,94	4,96	-	2,56		Psi 5075				inch 2,94	4,96	-	2,56	lb -					
QC ISO B SAE32 MALE	50	MPa 35	mm -	142	63,2	90	SAE32	kg -	NC03S08S000	QC ISO B SAE32 MALE	50	MPa 35	mm -	142	63,2	90	SAE32	kg -	NC03S08S000		
		Psi 5075	inch -	5,59	2,49	3,54		Psi 5075				inch -	5,59	2,49	3,54	lb -					
QC ISO B SAE32 FEMALE	50	MPa 35	mm 105	142	-	90	SAE32	kg -	NC04S08S000	QC ISO B SAE32 FEMALE	50	MPa 35	mm 105	142	-	90	SAE32	kg -	NC04S08S000		
		Psi 5075	inch 4,13	5,59	-	3,54		Psi 5075				inch 4,13	5,59	-	3,54	lb -					
QC ISO B G 2 MALE	50	MPa 9	mm -	142	63,2	90	G 2	kg -	NC03G08S000	QC ISO B G 2 MALE	50	MPa 9	mm -	142	63,2	90	G 2	kg -	NC03G08S000		
		Psi 1305	inch -	5,59	2,49	3,54		Psi 1305				inch -	5,59	2,49	3,54	lb -					
QC ISO B G 2 FEMALE	50	MPa 9	mm 105	142	-	90	G 2	kg -	NC04G08S000	QC ISO B G 2 FEMALE	50	MPa 9	mm 105	142	-	90	G 2	kg -	NC04G08S000		
		Psi 1305	inch 4,13	5,59	-	3,54		Psi 1305				inch 4,13	5,59	-	3,54	lb -					

ABOVE 1": *ON REQUEST